

TECHNIA

ADDNODE GROUP

myPLM & Addons

EXPERIENCE MATTERS



Agenda

- About myPLM
- OEM Update Subscriptions
- myPLM Addons
- Demo
- Q&A



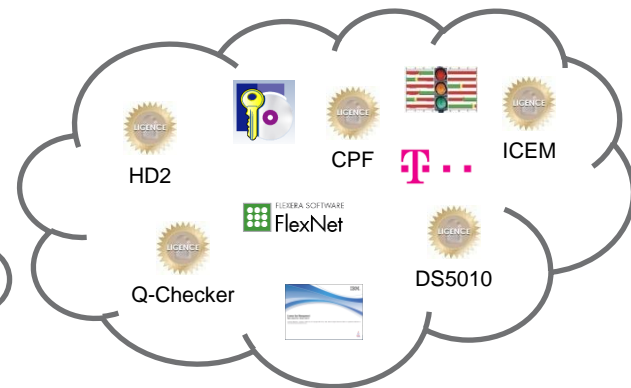
About



Applications



Licenses



WHY?

Standards & Settings



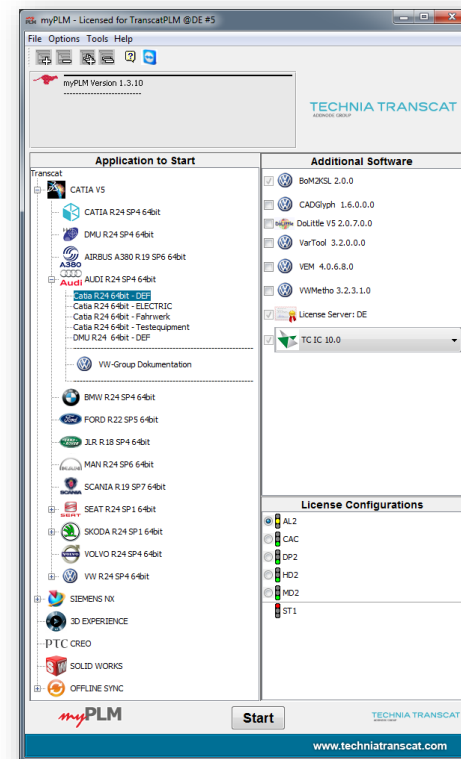
PLM / PDM



About myPLM

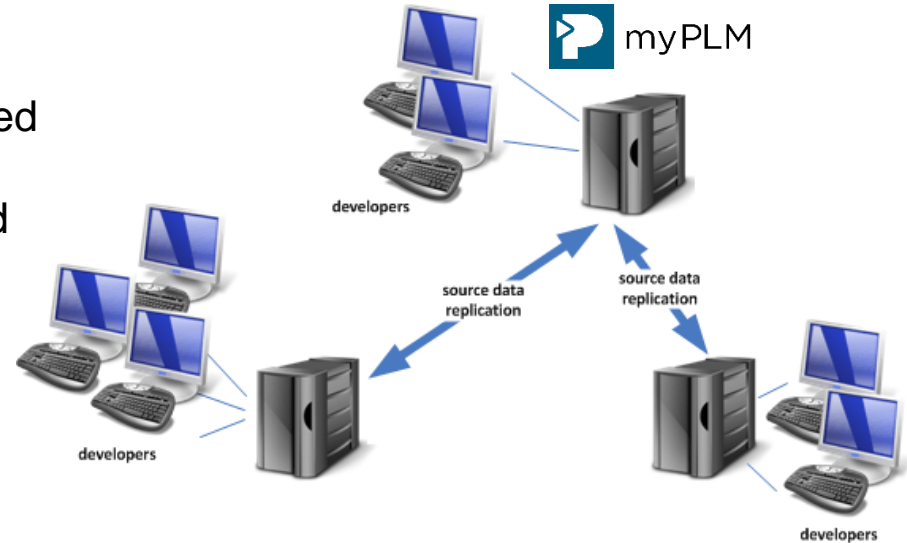
- CAD application & license management
- Well organized user interface in a node structured tree view
- Environment selection for different applications/OEM's
- Role based permission system

➔ The All-In-One application



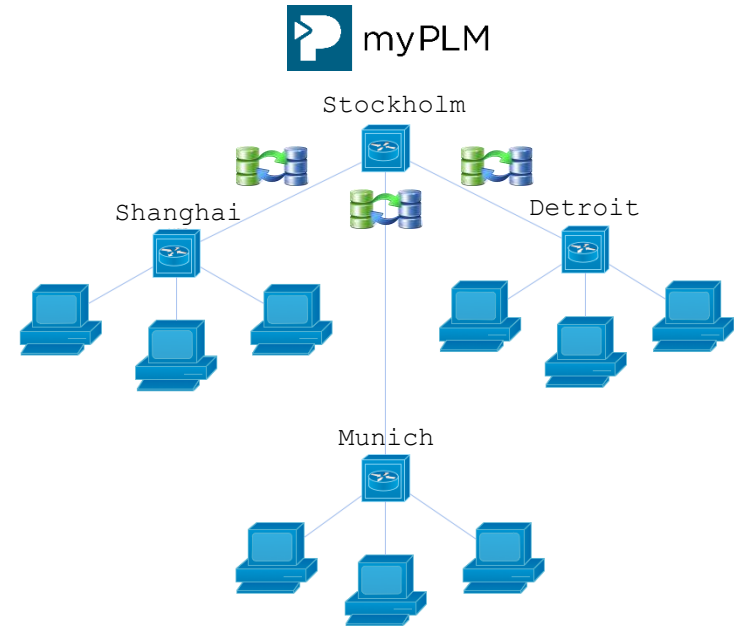
About myPLM

- myPLM is a Java based application
- No installation on CAD workstations required
- myPLM, Java & environments are provided on a server share
- Multisite synchronization



Multisite topology

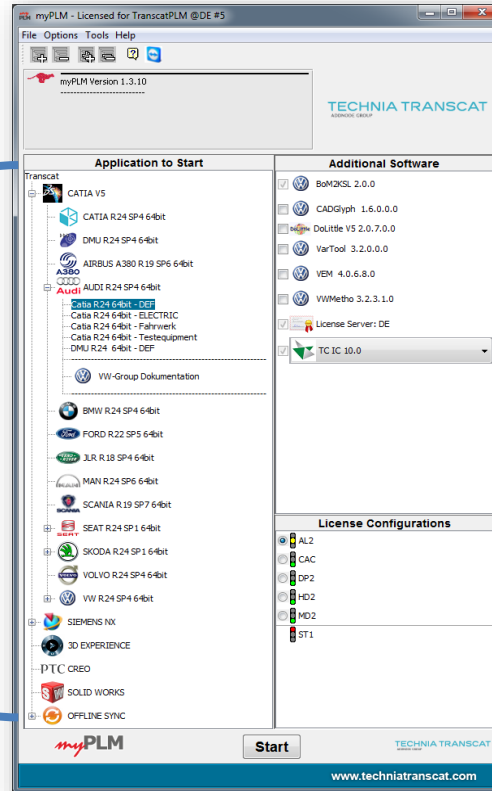
- Local repositories are used to increase performance and redundancy
- Speed up your change management process
- Automated multisite synchronization with:
 - DFS
 - Robocopy
 - NetApp
 - Aspera
 - ...



Multisite configuration

Global applications

- CATIA, NX, 3DEXP, CREO, ...
- Global environments



Site specific CAAs

- Site specific CAA configuration
- Site settings, macros, toolbars

Site specific licenses

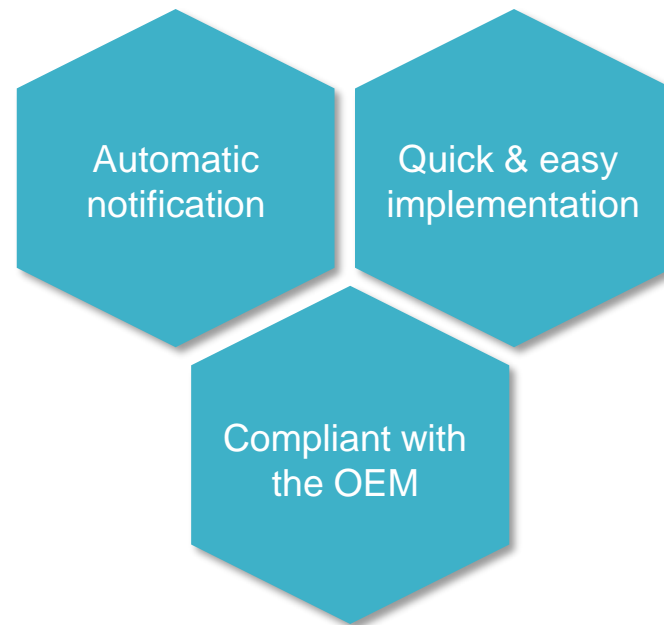
- Site specific license config
- License server & LTS config

OEM update subscriptions



OEM update subscriptions

- OEM supplier environments for myPLM are available as update subscription
- CAA's (e.g. Q-Checker) are already included
- Reduce time and effort to implement OEM environments
- Automated notification via mail when new packages are available



Available environments

- Information:

The screenshot shows the Technia website with the heading "Übersicht OEM Zuliefererumgebungen". Below the heading is a table with the following data:

OEM	TT Stamp	V5-6	NX	CREO	Build
BMW	2019_V.05	x			R26
Daimler CATIA	24_06_2014 Last version before Sundown	x			R19
Daimler COMFOK	2018_V.01	x			R19/R24/R28
Daimler NX	2019_V.01		x		NX12
Daimler JT	2018_V.03	x			1&2
Fiat	2018_V.02		x		NX11
Ford	2019_V.03	x			R26
GM	2019_V.01		x		NX11
Honda	2018_V.01	x			R25
Hyundai-KIA	2018_V.01	x			R25
JLR	2019_V.01	x			R18
MAN	2019_V.01	x			R28
Porsche	2019_V.05	x			R28
PSA	2018_V.01	x			R22
Scania	2019_V.01	x			R28
Toyota	2019_V.02	x			R25
Volvo Cars	2019_V.03	x			R26
Volvo Trucks	2019_V.02	x			R27
VW Group CATIA	2019_V.03	x			R28
VW Group CREO	2019_V.02			x	4.0 M070

<https://www.technia.de/service/>

- Download:

The screenshot shows a Technia sharefile interface with a list of folders. The folders and their details are as follows:

Folder Name	Size	Last Modified	Owner
BMW	1 GB	09/10/13	R. Rosna...
DAG	13 GB	12/02/14	R. Rosna...
FIAT	25 MB	05/03/15	J. Heger
FORD	1 GB	09/04/14	R. Rosna...
GEELY	85 MB	14/08/18	S. Christo...
GM	2 GB	14/04/14	R. Rosna...
HELLA	353 MB	13/05/19	S. Christo...
HONDA	547 MB	01/04/14	R. Rosna...
HYUNDAI-KIA	336 MB	01/03/18	S. Christo...
JLR	284 MB	20/01/15	J. Heger
KAERCHER	378 MB	13/07/18	S. Christo...
MAN	559 MB	20/01/15	M. Gibba...
MITSUBISHI	104 MB	21/05/19	S. Christo...
PAG	846 MB	22/11/13	R. Rosna...
PSA	297 MB	26/05/14	M. Gibba...
RENAULT	589 MB	20/03/14	R. Rosna...
SCANIA	233 MB	04/02/15	R. Rosna...
Testumgebung	0 B	25/06/18	R. Rosna...
SCHWEDA	872 MB	19/06/15	S. Christo...

<https://technia.sharefile.com/>

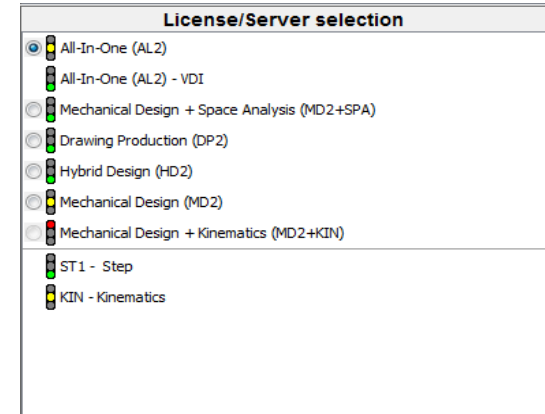
myPLM addons



Addon: License Traffic

- Show your license utilization with traffic lights in the myPLM user interface
- Users can check the availability of a license before starting the application
- Overview of all users who are currently using the license

➔ More comfort for your engineers

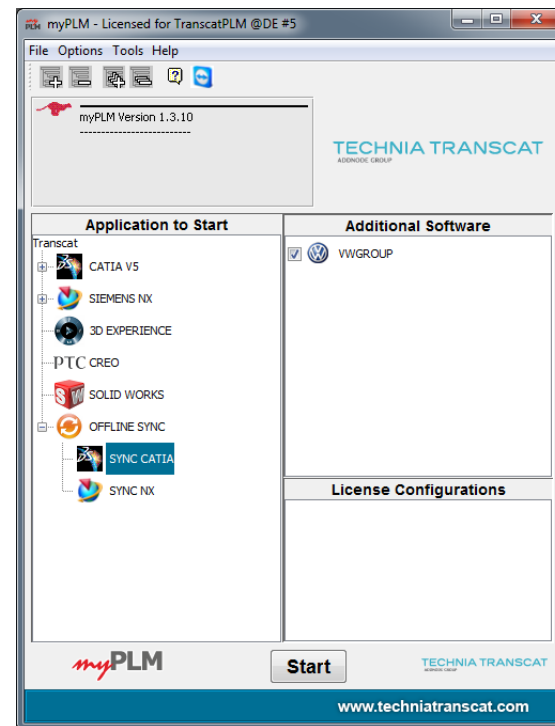


product	version	total	avail	user[in use]
ABC	200000000027335	36	34	user1@plm[14], user2@plm[14]
ADV	200000000027335	16	16	
AL2	200000000027335	2	1	user1@plm[14], user2@plm[14]
AL3	200000000027335	8	4	user1@plm[14], user2@plm[14], user3@plm[14], user4@plm[14]
ALV	200000000027335	3	3	
ALX	200000000027335	15	15	
ARM	200000000027335	25	18	user1@plm[14], user2@plm[14], user3@plm[14], user4@plm[14], user5@plm[14]

Addon: Offline Sync

- myPLM and environments can be synced to a local CAD workstation
- Engineer has the same GUI when working offline, at home office or when visiting a customer
- User will be advised when update necessary

➔ Work offline as well as online



Addon: Active Directory

- Connect the role based permission system to your “Active Directory”
- myPLM permissions will be set by a group membership in AD
- Changes are automatically taken from AD
- Authorizations can be applied on:
 - Applications & environments
 - Licenses
 - Site specific settings
 - ...



myPLM references



myPLM References



VOLVO

sapa:

SCHAEFFLER

STADLER
Cleverer Lösungen auf der Schiene



metabo



Viseon



YKK



B | BRAUN

altran



ALLGAIER

hansgrohe



STREETSCOOTER

iSi



Q&A



TECHNIA

ADDNODE GROUP



+49 721 970 43 -420



jan.heger@technia.com

EXPERIENCE MATTERS

